

# Hampshire Water Transfer and Water Recycling Project

## Environmental Statement - Appendix 19.2 Figure 8 Pipeline between the Water Recycling Plant site and Otterbourne Water Supply Works against water body boundaries

**VOLUME NUMBER: 6**

**PLANNING INSPECTORATE SCHEME NUMBER: WA010002**

**APPLICATION DOCUMENT REFERENCE: 6.3**

**APFP REGULATION: 5(2)(a)**

May 2026

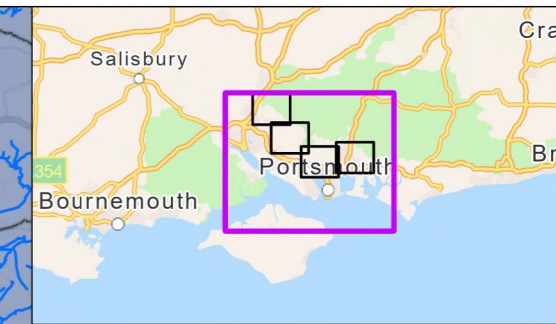
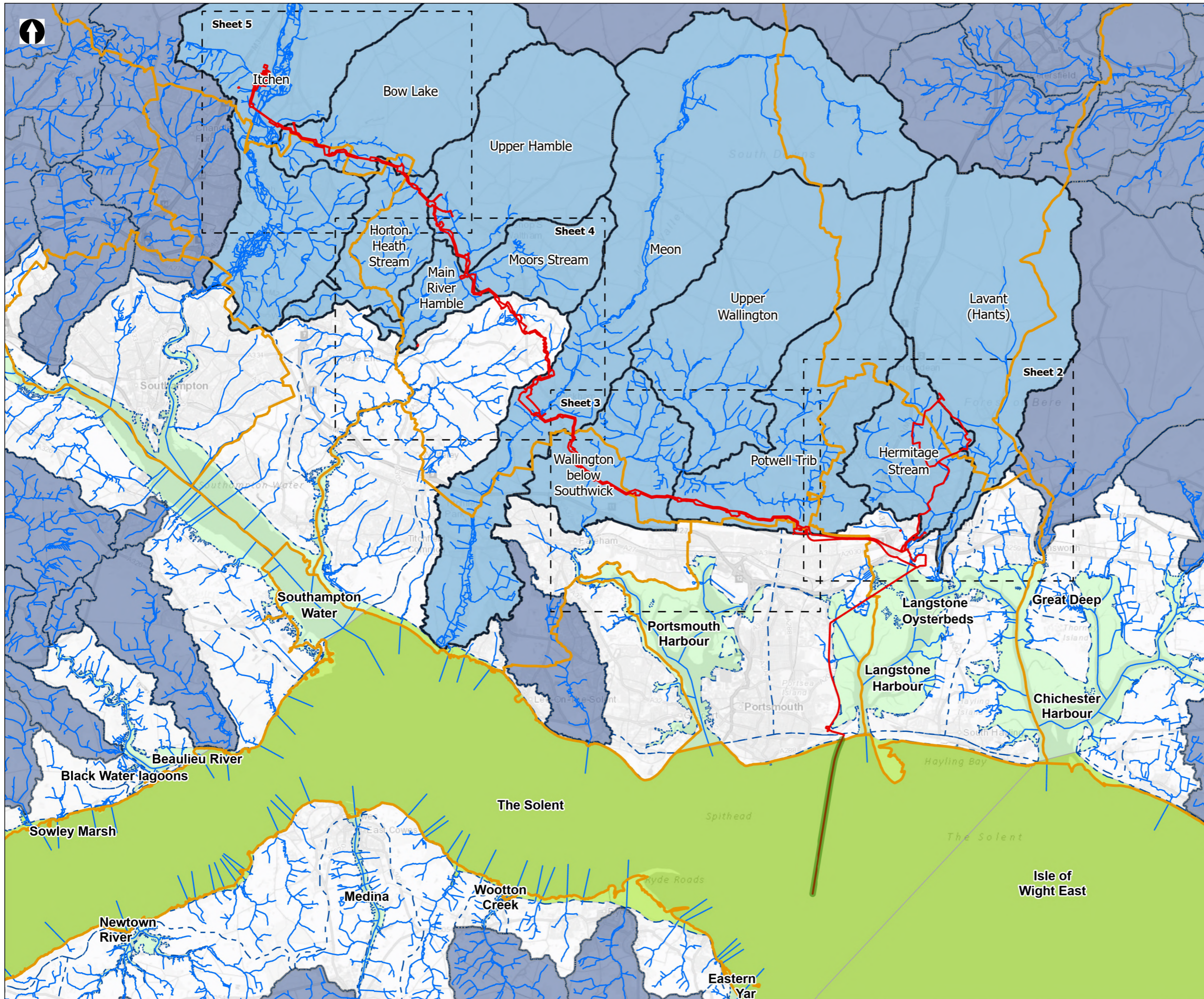
Version 0



from  
**Southern  
Water** 

The Southern Water logo consists of the words 'Southern' and 'Water' stacked vertically in a dark blue, sans-serif font. To the right of the word 'Water' is a graphic element consisting of three stylized, wavy lines in shades of blue, representing water.





**Order Limits**

Sheet Extent Boxes 1:30K

Local planning authorities

**Surface Water Features**

Detailed River Network

**WFD**

River Water Body Polylines

River Water Body Catchment Crossing Through Development Area

**Coastal/Transitional Water Bodies**

Transitional Water Bodies

Coastal Water Bodies

Coastal Water Bodies within Order Limits

Coordinate system: British National Grid; Datum: OSGB 1936  
 Data sources: © Crown copyright and database rights 2026 Ordnance Survey 0100031673. © Environment Agency, Contains OS data © Crown Copyright and database right 2020, Sources: Esri, TomTom, Garmin, FAO, NOAA, USGS, © OpenStreetMap contributors, and the GIS User Community

PROJECT TITLE  
 Hampshire Water Transfer and Water Recycling Project

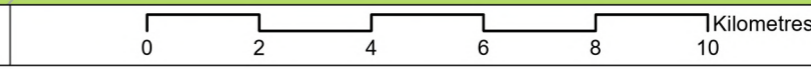


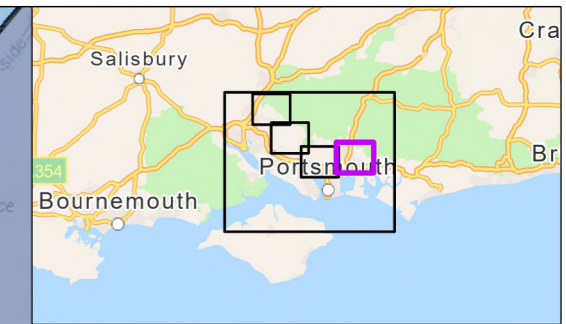
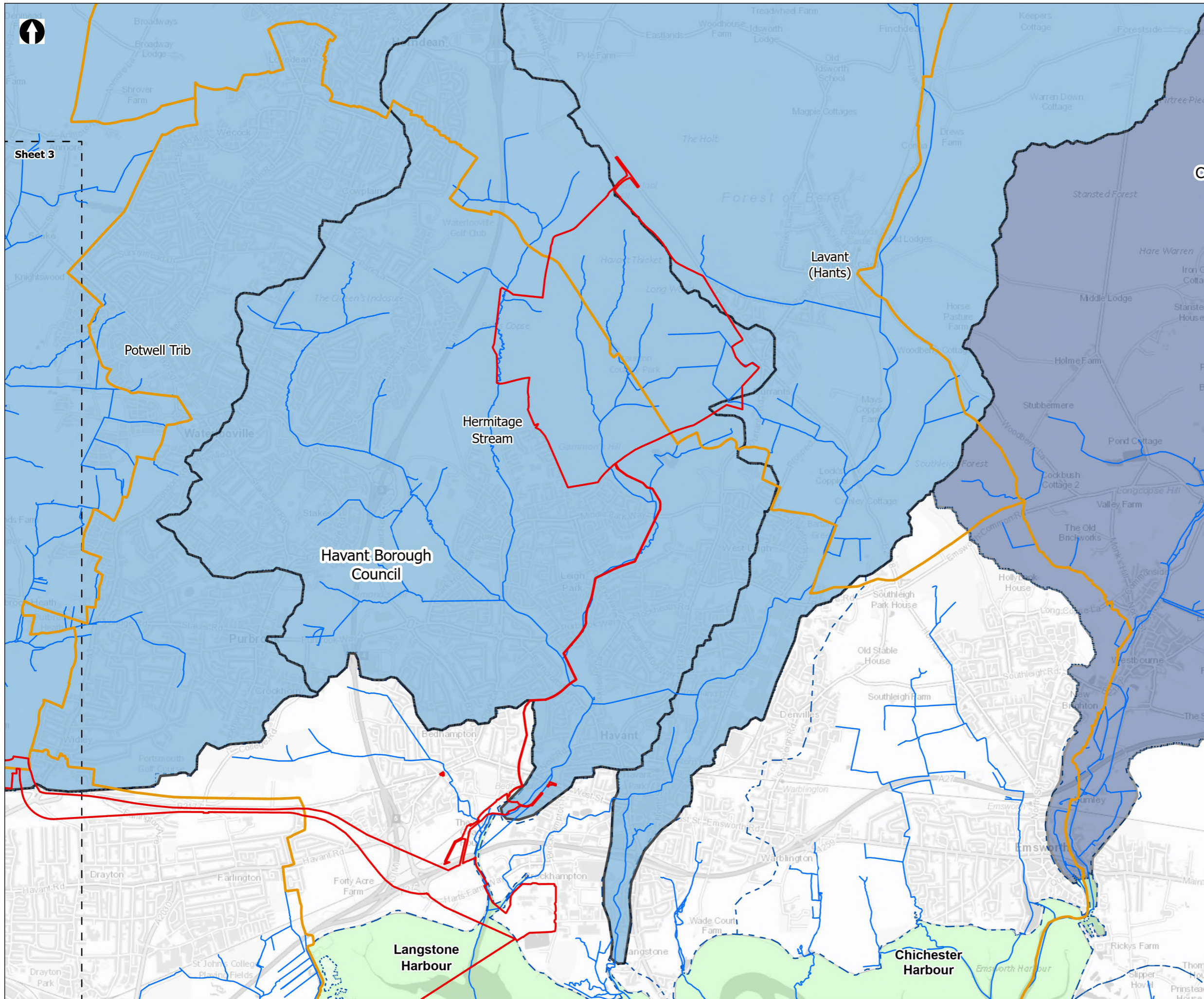
Appendix 19.2. Figure 8  
 Pipeline between the Water Recycling Plant site and Otterbourne Water Supply Works against water body boundaries

Drawn <b>DL</b>	GIS Checked <b>MW</b>	Checked <b>MP</b>	Approved <b>AK</b>
Scale at A3 <b>1:135,000</b>	Status <b>Final</b>	Revision <b>05</b>	Security <b>STD</b>

Drawing Number  
**PC5223-RHD-ES-ZZ-D-Z-0103**

© Southern Water 2026  
 This document is issued for the party which commissioned it and for specific purposes connected with the captioned project only. It should not be relied upon by any other party or used for any other purpose. We accept no responsibility for the consequences of this document being relied upon by any other party, or being used for any other purpose, or containing any error or omission which is due to an error or omission in data supplied to us by other parties.





Sheet 3

- Order Limits
- Sheet Extent Boxes 1:30K
- Local planning authorities
- Surface Water Features**
- Detailed River Network
- WFD**
- River Water Body Polylines
- River Water Body Catchment Crossing Through Development Area
- Coastal/Transitional Water Bodies**
- Transitional Water Bodies

Coordinate system: British National Grid; Datum: OSGB 1936  
 Data sources: © Crown copyright and database rights 2026 Ordnance Survey 0100031673. © Environment Agency, Contains OS data © Crown Copyright and database right 2020, Sources: Esri, TomTom, Garmin, FAO, NOAA, USGS, © OpenStreetMap contributors, and the GIS User Community

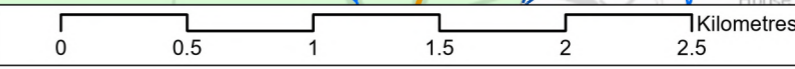
PROJECT TITLE  
 Hampshire Water Transfer and Water Recycling Project



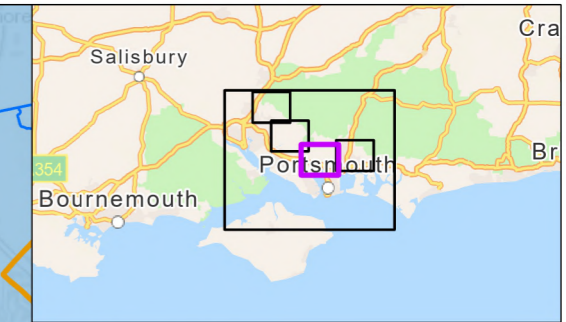
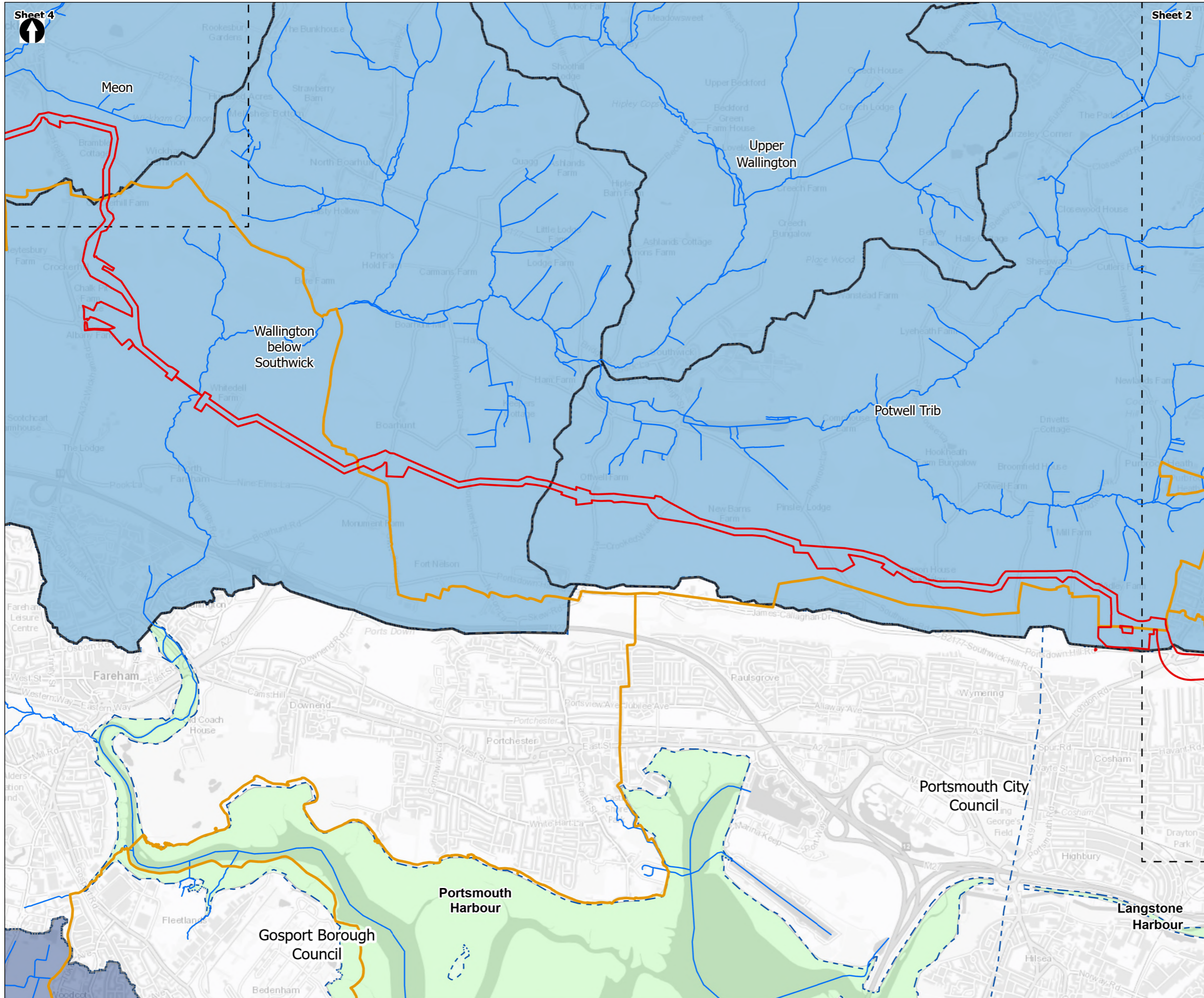
Appendix 19.2. Figure 8  
 Pipeline between the Water Recycling Plant site and Otterbourne Water Supply Works against water body boundaries

Drawn <b>DL</b>	GIS Checked <b>MW</b>	Checked <b>MP</b>	Approved <b>AK</b>
Scale at A3 <b>1:30,000</b>	Status <b>Final</b>	Revision <b>05</b>	Security <b>STD</b>

© Southern Water 2026  
 This document is issued for the party which commissioned it and for specific purposes connected with the captioned project only. It should not be relied upon by any other party or used for any other purpose. We accept no responsibility for the consequences of this document being relied upon by any other party, or being used for any other purpose, or containing any error or omission which is due to an error or omission in data supplied to us by other parties.



Drawing Number  
**PC5223-RHD-ES-ZZ-D-Z-0103**



**Order Limits**

Sheet Extent Boxes 1:30K

Local planning authorities

**Surface Water Features**

Detailed River Network

**WFD**

River Water Body Polylines

River Water Body Catchment Crossing Through Development Area

**Coastal/Transitional Water Bodies**

Transitional Water Bodies

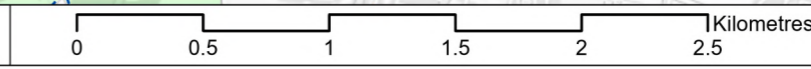
Coordinate system: British National Grid; Datum: OSGB 1936  
 Data sources: © Crown copyright and database rights 2026 Ordnance Survey 0100031673. © Environment Agency, Contains OS data © Crown Copyright and database right 2020, Sources: Esri, TomTom, Garmin, FAO, NOAA, USGS, © OpenStreetMap contributors, and the GIS User Community

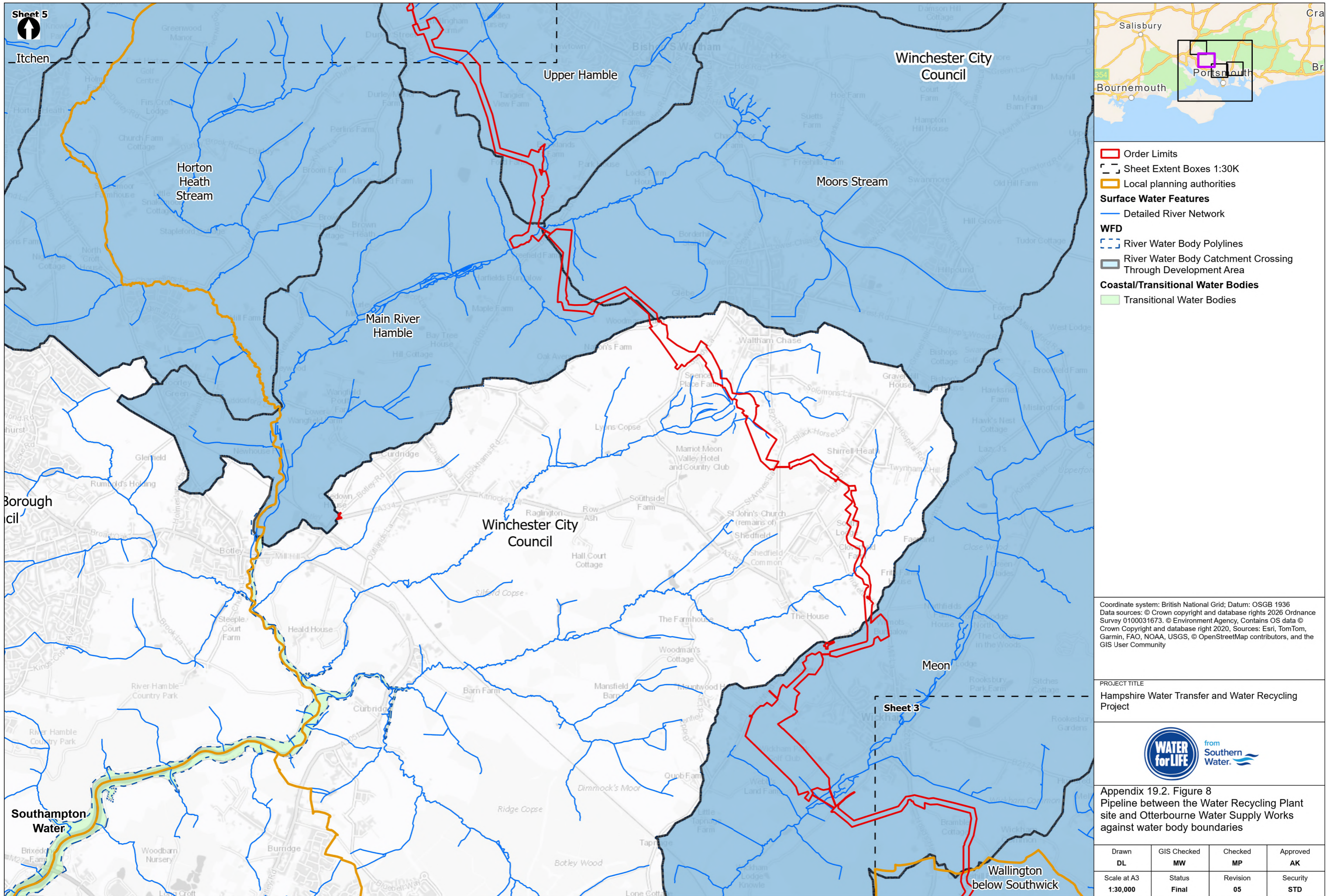
PROJECT TITLE  
 Hampshire Water Transfer and Water Recycling Project



Appendix 19.2. Figure 8  
 Pipeline between the Water Recycling Plant site and Otterbourne Water Supply Works against water body boundaries

Drawn DL	GIS Checked MW	Checked MP	Approved AK
Scale at A3 1:30,000	Status Final	Revision 05	Security STD





Sheet 5

Itchen

Horton Heath Stream

Upper Hamble

Winchester City Council

Moors Stream

Main River Hamble

Winchester City Council

Borough cil

Meon

Sheet 3

Southampton Water

Wallington below Southwick

- Order Limits
- Sheet Extent Boxes 1:30K
- Local planning authorities
- Surface Water Features**
- Detailed River Network
- WFD**
- River Water Body Polylines
- River Water Body Catchment Crossing Through Development Area
- Coastal/Transitional Water Bodies**
- Transitional Water Bodies

Coordinate system: British National Grid; Datum: OSGB 1936  
 Data sources: © Crown copyright and database rights 2026 Ordnance Survey 0100031673. © Environment Agency, Contains OS data © Crown Copyright and database right 2020, Sources: Esri, TomTom, Garmin, FAO, NOAA, USGS, © OpenStreetMap contributors, and the GIS User Community

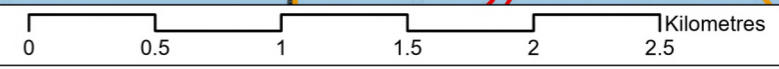
PROJECT TITLE  
 Hampshire Water Transfer and Water Recycling Project



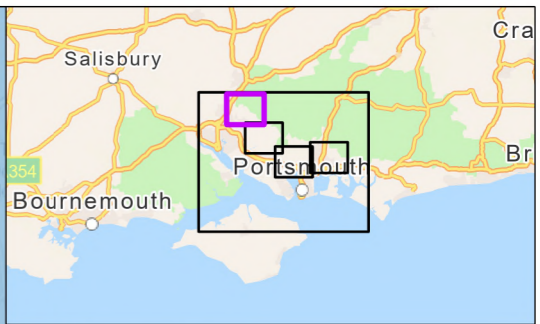
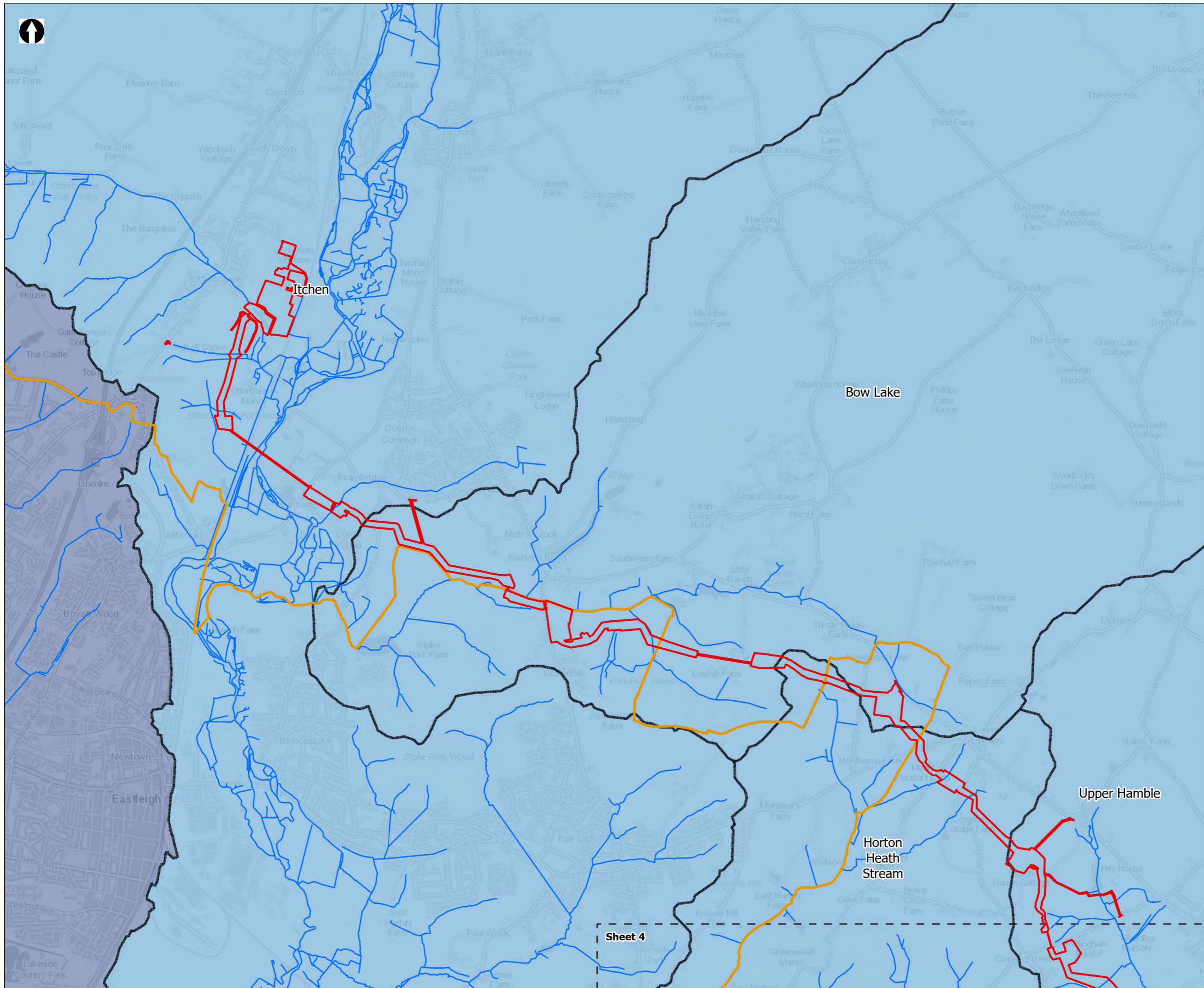
Appendix 19.2. Figure 8  
 Pipeline between the Water Recycling Plant site and Otterbourne Water Supply Works against water body boundaries

Drawn <b>DL</b>	GIS Checked <b>MW</b>	Checked <b>MP</b>	Approved <b>AK</b>
Scale at A3 <b>1:30,000</b>	Status <b>Final</b>	Revision <b>05</b>	Security <b>STD</b>

© Southern Water 2026  
 This document is issued for the party which commissioned it and for specific purposes connected with the captioned project only. It should not be relied upon by any other party or used for any other purpose.  
 We accept no responsibility for the consequences of this document being relied upon by any other party, or being used for any other purpose, or containing any error or omission which is due to an error or omission in data supplied to us by other parties.



Drawing Number  
**PC5223-RHD-ES-ZZ-D-Z-0103**



**Order Limits**

**Sheet Extent Boxes 1:30K**

**Local planning authorities**

**Surface Water Features**

- Detailed River Network

**WFD**

- River Water Body Polylines
- River Water Body Catchment Crossing Through Development Area

Coordinate system: British National Grid; Datum: OSGB 1936  
 Data sources: © Crown copyright and database rights 2026 Ordnance Survey 0100031673. © Environment Agency, Contains OS data © Crown Copyright and database right 2020, Sources: Esri, TomTom, Garmin, FAO, NOAA, USGS, © OpenStreetMap contributors, and the GIS User Community

PROJECT TITLE  
 Hampshire Water Transfer and Water Recycling Project



Appendix 19.2. Figure 8  
 Pipeline between the Water Recycling Plant site and Otterbourne Water Supply Works against water body boundaries

Drawn <b>DL</b>	GIS Checked <b>MW</b>	Checked <b>MP</b>	Approved <b>AK</b>
Scale at A3 <b>1:30,000</b>	Status <b>Final</b>	Revision <b>05</b>	Security <b>STD</b>

Drawing Number  
**PC5223-RHD-ES-ZZ-D-Z-0103**

